

Product Datasheet

RalA Antibody

Catalog No: CY9979

Reactivity: Human

Isotype: Rabbit IgG

Applications: WB IHC



www.abways.com

www.abways.cn

Information

UniProt ID: P11233

All Names: Ral a; RAL; RALA;

Form: Liquid

Storage instructions: Store at +4°C short term. Store at -20°C long term. Avoid freeze / thaw cycle.

Storage buffer: pH 7.4, 150mM NaCl, 0.02% sodium azide and 50% glycerol.

Purity: Affinity-chromatography

Immunogen: A synthesized peptide

Molecular Wt.: 25kDa

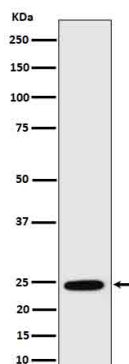
Application

WB 1:500~1:2000

IHC 1:50~1:200

Background

Multifunctional GTPase involved in a variety of cellular processes including gene expression, cell migration, cell proliferation, oncogenic transformation and membrane trafficking. Accomplishes its multiple functions by interacting with distinct downstream effectors.



Western blot analysis of RalA in MCF7 cell lysate.

For Research Use Only. Not For Use In Diagnostic Procedures.

www.abways.com