

Product Datasheet

SLC22A3 Antibody



Catalog No: CY9937

Reactivity: Human

Isotype: Rabbit IgG

Applications: WB IHC FC

www.abways.com

Information

UniProt ID: O75751

All Names: EMT; EMTH; OCT3; Orct3; Slc22a3;

Form: Liquid

Storage instructions: Store at +4° C short term. Store at -20° C long term. Avoid freeze / thaw cycle.

Storage buffer: pH 7.4, 150mM NaCl, 0.02% sodium azide and 50% glycerol.

Purity: Affinity-chromatography

Immunogen: A synthesized peptide

Molecular Wt.: 75kDa

Application

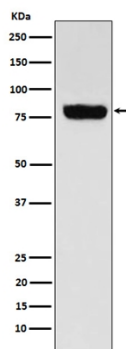
WB 1:500~1:2000

IHC 1:50~1:200

FC 1:50

Background

Mediates potential-dependent transport of a variety of organic cations. May play a significant role in the disposition of cationic neurotoxins and neurotransmitters in the brain.



Western blot analysis of SLC22A3 expression in Human muscle cell lysate.

For Research Use Only. Not For Use In Diagnostic Procedures.

www.abways.com