

Product Datasheet

S1PR3 Antibody



Catalog No: CY8480

Reactivity: Human Mouse Rat

Isotype: Rabbit IgG

Applications: WB

www.abways.com

Information

UniProt ID: Q99500

All Names: EDG3; LPB3; S1P3; S1pr3;

Form: Liquid

Storage instructions: Store at +4° C short term. Store at -20° C long term. Avoid freeze / thaw cycle.

Storage buffer: pH 7.4, 150mM NaCl, 0.02% sodium azide and 50% glycerol.

Purity: Affinity-chromatography

Immunogen: A synthesized peptide

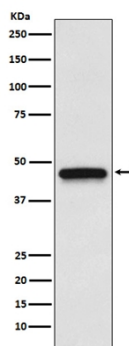
Molecular Wt.: 42kDa

Application

WB 1:500~1:2000

Background

Receptor for the lysosphingolipid sphingosine 1-phosphate (S1P). S1P is a bioactive lysophospholipid that elicits diverse physiological effect on most types of cells and tissues.



Western blot analysis of S1PR3 expression in HepG2 cell lysate.

For Research Use Only. Not For Use In Diagnostic Procedures.

www.abways.com