

Product Datasheet

Actin Antibody



Catalog No: CY6716

Reactivity: Human Mouse Rat Chicken

Isotype: Rabbit IgG

Applications: WB ICC/IF FC

www.abways.com

Information

UniProt ID: P68133

All Names: ACTA; ACTA1; Actin alpha skeletal muscle; Alpha Actin 1; Alpha skeletal muscle Actin; alpha-actin; Alpha-actin-1; ASMA; CFTD; CFTD1; CFTDM;

Form: Liquid

Storage instructions: Store at +4° C short term. Store at -20° C long term. Avoid freeze / thaw cycle.

Storage buffer: pH 7.4, 150mM NaCl, 0.02% sodium azide and 50% glycerol.

Purity: Affinity-chromatography

Immunogen: A synthesized peptide

Molecular Wt.: 42 kDa

Application

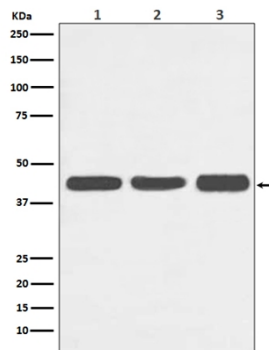
WB 1:1000~1:5000

ICC/IF 1:50~1:200

FC 1:50

Background

Actins are highly conserved proteins that are involved in various types of cell motility and are ubiquitously expressed in all eukaryotic cells.



Western blot analysis of Actin expression in (1) HeLa cell lysate; (2) NIH/3T3 cell lysate; (3) C6 cell lysate.

For Research Use Only. Not For Use In Diagnostic Procedures.

www.abways.com