

Product Datasheet

Aurora B Antibody

Catalog No: CY5007

Reactivity: Human, Mouse, Rat

Isotype: Rabbit IgG

Applications: WB IHC ICC/IF IP



www.abways.com

Information

UniProt ID: Q96GD4

All Names: AIK2, AIM-1, AIM1, ARK2, AURKB, Aurora- and Ipl1-like midbody-associated protein 1, Aurora-B, Aurora-related kinase 2, Aurora/IPL1-related kinase 2, EC 2.7.11.1, STK-1, STK12, Serine/threonine protein kinase 12

Form: Liquid

Storage instructions: Store at +4°C short term. Store at -20°C long term. Avoid freeze / thaw cycle.

Storage buffer: pH 7.4, 150mM NaCl, 0.02% sodium azide and 50% glycerol.

Purity: Affinity-chromatography

Immunogen: A synthesized peptide

Molecular Wt.: 39 kDa

Application

WB: 1:1000~1:2000

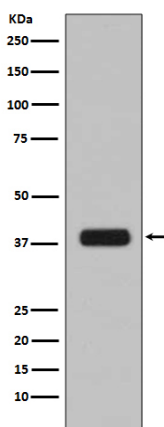
IHC: 1:50~1:200

ICC/IF: 1:50~1:200

IP: 1:50

Background

May be directly involved in regulating the cleavage of polar spindle microtubules and is a key regulator for the onset of cytokinesis during mitosis. Component of the chromosomal passenger complex (CPC), a complex that acts as a key regulator of mitosis. The CPC complex has essential functions at the centromere in ensuring correct chromosome alignment and segregation and is required for chromatin-induced microtubule stabilization and spindle assembly. Phosphorylates 'Ser-10' and 'Ser-28' of histone H3 during mitosis. Required for kinetochore localization of BUB1 and SGOL1. Interacts with INCENP.



Western blot analysis of Aurora B expression in HeLa cell lysate.

For Research Use Only. Not For Use In Diagnostic Procedures.

www.abways.com