

Product Datasheet

KIFC1 Antibody



Catalog No: CY5005

Reactivity: Human

Isotype: Rabbit IgG

Applications: WB IHC ICC/IF IP

www.abways.com

Information

UniProt ID: Q9BW19

All Names: HSET; HSET KNSL2; KIFC1; Kinesin family member C1; KNSL2 ; MGC1202 ; MKLP2; RAB6 KIFL ; Rabkinesin 6;

Form: Liquid

Storage instructions: Store at +4°C short term. Store at -20°C long term. Avoid freeze / thaw cycle.

Storage buffer: pH 7.4, 150mM NaCl, 0.02% sodium azide and 50% glycerol.

Purity: Affinity-chromatography

Immunogen: A synthesized peptide

Molecular Wt.: 74 kDa

Application

WB: 1:1000~1:2000

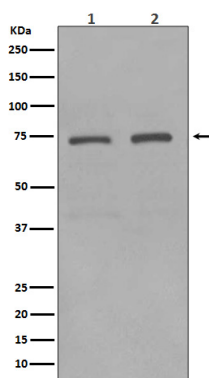
IHC: 1:50~1:200

ICC/IF: 1:50~1:200

IP: 1:50

Background

Minus end-directed microtubule-dependent motor required for bipolar spindle formation. May contribute to movement of early endocytic vesicles.



Western blot analysis of KIFC1 expression in(1) HeLa cell lysate;(2) HepG2 cell lysate.

For Research Use Only. Not For Use In Diagnostic Procedures.

www.abways.com