

## Product Datasheet

# MKLP1 Antibody



Catalog No: CY5003

Reactivity: Human, Mouse, Rat

Isotype: Rabbit IgG

Applications: WB, ICC/IF

[www.abways.com](http://www.abways.com)

### Information

**UniProt ID:** Q02241

**All Names:** CHO 1;CHO1;KIF 23;KIF23;;KNS L5;KNSL 5;KNSL5;Mitotic kinesin like 1;Mitotic kinesin like protein 1; MKLP 1;

**Form:** Liquid

**Storage instructions:** Store at +4° C short term. Store at -20° C long term. Avoid freeze / thaw cycle.

**Storage buffer:** pH 7.4, 150mM NaCl, 0.02% sodium azide and 50% glycerol.

**Purity:** Affinity-chromatography

**Immunogen:** A synthesized peptide

**Molecular Wt.:** 98 kDa

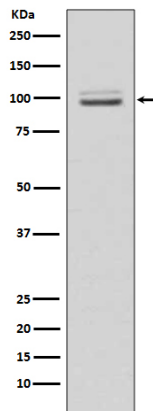
### Application

WB: 1:500~1:2000

ICC/IF: 1:50~1:200

### Background

Plus-end-directed motor enzyme that moves antiparallel microtubules in vitro. Localizes to the interzone of mitotic spindles.



Western blot analysis of MKLP1 expression in HeLa cell lysate.

**For Research Use Only. Not For Use In Diagnostic Procedures.**

[www.abways.com](http://www.abways.com)