

Product Datasheet

IL6 Mouse mAb

Catalog No: BY5001

Reactivity: Human

Isotype: Mouse IgG

Applications: WB IHC ICC/IF



www.abways.com

Information

UniProt ID: P05231

All Names: Interleukin-6, B-cell stimulatory factor 2 (BSF-2), CTL differentiation factor (CDF), Hybridoma growth factor, Interferon beta-2 (IFN-beta-2), IFNB2

Form: Liquid

Storage instructions: Store at +4°C short term. Store at -20°C long term. Avoid freeze / thaw cycle.

Storage buffer: pH 7.4, 150mM NaCl, 0.02% sodium azide and 50% glycerol.

Purity: Affinity-chromatography

Immunogen: A synthesized peptide

Molecular Wt.: 20KDa

Application

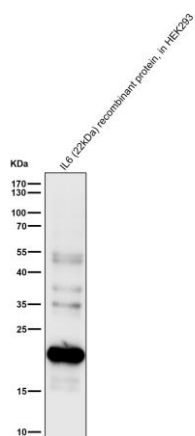
WB: 1:1000~1:10000

IHC 1:50~1:500

ICC/IF 1:50~1:500

Background

Cytokine with a wide variety of biological functions. It is a potent inducer of the acute phase response. Plays an essential role in the final differentiation of B-cells into Ig-secreting cells Involved in lymphocyte and monocyte differentiation. It induces myeloma and plasmacytoma growth and induces nerve cells differentiation Acts on B-cells, T-cells, hepatocytes, hematopoietic progenitor cells and cells of the CNS. Also acts as a myokine. It is discharged into the bloodstream after muscle contraction and acts to increase the brea own of fats and to improve insulin resistance.Genetic variations in IL6 are associated with susceptibility to rheumatoid arthritis systemic juvenile. An inflammatory articular disorder with systemic-onset beginning before the age of 16. It represents a subgroup of juvenile arthritis associated with severe extraarticular features and occasionally fatal complications. During active phases of the disorder, patients display a typical daily spiking fever, an evanescent macular rash, lymphadenopathy, hepatosplenomegaly, serositis, myalgia and arthritis.



All lanes use the Antibody at 1:3K dilution for 1 hour at room temperature.

For Research Use Only. Not For Use In Diagnostic Procedures.

www.abways.com