

Product Datasheet

Claudin 1 Antibody

Catalog No: BY0106

Reactivity: Human, Mouse, Rat

Isotype: Rabbit IgG

Applications: WB IHC



www.abways.com

www.abways.cn

Information

UniProt ID: O95832

All Names: Claudin1; CLD11; CLDN 1; ILVASC; SEMP1;

Form: Liquid

Storage instructions: Store at +4°C short term. Store at -20°C long term. Avoid freeze / thaw cycle.

Storage buffer: pH 7.4, 150mM NaCl, 0.02% sodium azide and 50% glycerol.

Purity: Affinity-chromatography

Immunogen: A synthesized peptide

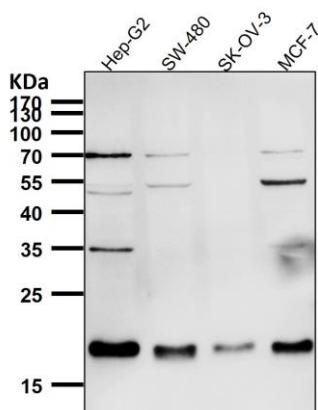
Molecular Wt.: 19kDa

Application

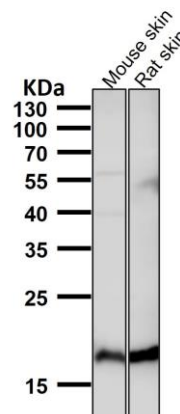
WB 1:500~1:2000

Background

The claudin family is composed of 23 integral membrane proteins, and their expression, which varies among tissue types, may determine both the strength and properties of the epithelial barrier. Alteration in claudin protein expression pattern is associated with several types of cancer. Claudin-1 is expressed primarily in keratinocytes and normal mammary epithelial cells, but is absent or reduced in breast carcinomas and breast cancer cell lines.



All lanes use the Antibody at 1:1k dilution for 1 hour at room temperature.



All lanes use the Antibody at 1:1k dilution for 1 hour at room temperature.

For Research Use Only. Not For Use In Diagnostic Procedures.

www.abways.com