

Product Datasheet

Collagen II Antibody

Catalog No: BY0103

Reactivity: Human, Mouse, Rat

Isotype: Rabbit IgG

Applications: WB IHC ICC/IF



www.abways.com
www.abways.cn

Information

UniProt ID: P02458

All Names: Alpha-1 type II collagen; ANFH; AOM; cartilage collagen; Chondrocalcin; CO2A1; COL11A3; COL2A1; Collagen alpha-1(II) chain; collagen II, alpha-1 polypeptide; collagen, type II, alpha 1; MGC131516; SEDC

Form: Liquid

Storage instructions: Store at +4°C short term. Store at -20°C long term. Avoid freeze / thaw cycle.

Storage buffer: pH 7.4, 150mM NaCl, 0.02% sodium azide and 50% glycerol.

Purity: Affinity-chromatography

Immunogen: A synthesized peptide

Molecular Wt.: 30-50kDa; 140kDa

Application

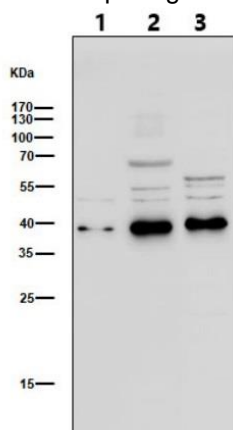
WB 1:500~1:2000

IHC 1:50~1:200

IF/ICC 1:100~1:500

Background

COL2A1 Type II collagen is specific for cartilaginous tissues. It is essential for the normal embryonic development of the skeleton, for linear growth and for the ability of cartilage to resist compressive forces. Belongs to the fibrillar collagen family. Homotrimers of alpha 1(II) chains. 3 isoforms of the human protein are produced by alternative splicing



Western blot analysis of extracts from HeLa cells, 293 cells and K562 cells, using Collagen II Antibody.

For Research Use Only. Not For Use In Diagnostic Procedures.
www.abways.com