

## Product Datasheet

# EEF1G Antibody

Catalog No: AY2046

Reactivity: Human, Mouse, Rat

Isotype: Rabbit IgG

Applications: WB



[www.abways.com](http://www.abways.com)

### Information

**UniProt ID:** P26641

**All Names:** eEF-1B gamma; EF-1-gamma; EF1G; elongation factor 1-gamma; eukaryotic translation elongation factor 1 gamma; pancreatic tumor-related protein

**Form:** Liquid

**Storage instructions:** Store at +4°C short term. Store at -20°C long term. Avoid freeze / thaw cycle.

**Storage buffer:** pH 7.4, 150mM NaCl, 0.02% sodium azide and 50% glycerol.

**Purity:** Affinity-chromatography

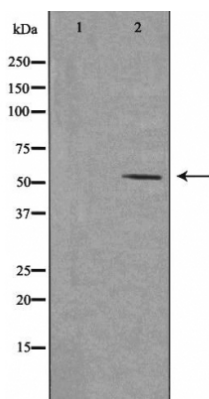
**Immunogen:** A synthesized peptide

**Molecular Wt.:** 55 KD

### Application

WB 1:500~1:1000

### Background



Western blot analysis of extracts from HepG2 cells and HUVEC cells, using EEF1G antibody.

**For Research Use Only. Not For Use In Diagnostic Procedures.**

[www.abways.com](http://www.abways.com)