

## Product Datasheet

# Tubulin $\beta$ Antibody



Catalog No: AY0684

Reactivity: Human, Mouse, Rat

Isotype: Rabbit IgG

Applications: WB, IHC

[www.abways.com](http://www.abways.com)

### Information

**UniProt ID:** Q13509

**All Names:** TBB2, TBB5, TUBB, TUBB5, Tubulin beta chain, Tubulin beta-5 chain

**Form:** Liquid

**Storage instructions:** Store at +4°C short term. Store at -20°C long term. Avoid freeze / thaw cycle.

**Storage buffer:** pH 7.4, 150mM NaCl, 0.02% sodium azide and 50% glycerol.

**Purity:** Affinity-chromatography

**Immunogen:** A synthesized peptide

**Molecular Wt.:**

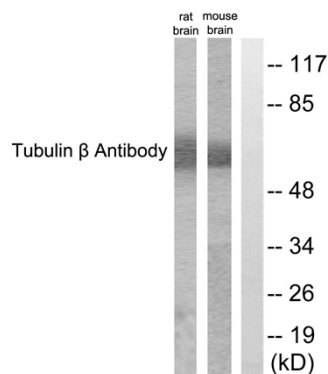
### Application

WB: 1:500~1:3000

IHC: 1:50~1:100

ELISA: 1:5000

### Background



Western blot analysis of extracts from rat brain and mouse brain cells, using Tubulin  $\beta$  antibody.

**For Research Use Only. Not For Use In Diagnostic Procedures.**

[www.abways.com](http://www.abways.com)