

## Product Datasheet

### Acetyl-Alpha-Tubulin (Lys40) (9B8) Mouse mAb

Catalog No: AB3566

Reactivity: Human, Mouse, Rat

Isotype: Mouse IgG1

Applications: WB, IHC



www.abways.com

#### Information

**UniProt ID:** P68363

**All Names:** alpha tubulin 2; B alpha 1; H2 alpha; Hum a tub 1; TUBA1; TUBA1A; Tubulin alpha 1chain

**Form:** Liquid

**Storage instructions:** Store at +4°C short term. Store at -20°C long term. Avoid freeze / thaw cycle.

**Storage buffer:** pH 7.4, 150mM NaCl, 0.02% sodium azide and 50% glycerol.

**Purity:** Affinity-chromatography

**Immunogen:** A synthesized peptide

**Molecular Wt.:** 52kDa

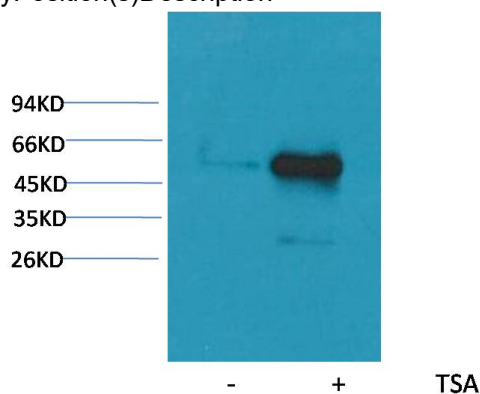
#### Application

WB: 1/500-1/1000

IHC: 1/50-1/100

#### Background

Swiss-Prot Acc.P68363.Tubulin is the major constituent of microtubules. It binds two moles of GTP, one at an exchangeable site on the beta chain and one at a non-exchangeable site on the alpha chain. SitesFeature keyPosition(s)Description



Western blot analysis of AcetylAlpha Tubulin (Lys40) (9B8) in HeLa, untreated (-) or treated with TSA (1 $\mu$ M, 18 hr; +), using Acetyl atubulin(Lys40) antibody.

**For Research Use Only. Not For Use In Diagnostic Procedures.**

www.abways.com