

Product Datasheet

alpha Tubulin (Zebrafish Specific) (4C7) Mouse mAb



Catalog No: AB3552

Reactivity: Human, Mouse, Rat, Zebrafish

www.abways.com

Isotype: Mouse IgG1

Applications: WB

Information

UniProt ID: P68363

All Names: Tubulin alpha-1B chain; Alpha-tubulin ubiquitous; Tubulin K-alpha-1; Tubulin alpha-ubiquitous chain

Form: Liquid

Storage instructions: Store at +4°C short term. Store at -20°C long term. Avoid freeze / thaw cycle.

Storage buffer: pH 7.4, 150mM NaCl, 0.02% sodium azide and 50% glycerol.

Purity: Affinity-chromatography

Immunogen: A synthesized peptide

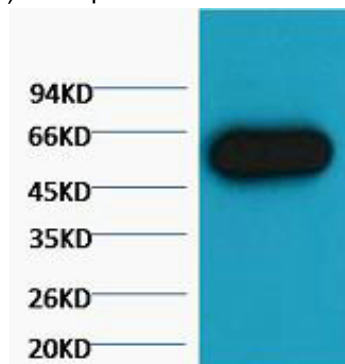
Molecular Wt.: 52kDa

Application

WB: 1/500-1/1000

Background

Swiss-Prot Acc.P68363.Tubulin is the major constituent of microtubules. It binds two moles of GTP, one at an exchangeable site on the beta chain and one at a non-exchangeable site on the alpha chain. SitesFeature keyPosition(s)Description



Western blot analysis of alpha Tubulin in Zebrafish skeletal muscle(Zebrafish Specific) using alpha Tubulin antibody.

For Research Use Only. Not For Use In Diagnostic Procedures.

www.abways.com