

## Product Datasheet

# beta III Tubulin (3H2) Mouse mAb



Catalog No: AB3456

Reactivity: Human, Mouse, Rat

Isotype: Mouse IgG1

Applications: WB

[www.abways.com](http://www.abways.com)

### Information

**UniProt ID:** Q13509

**All Names:** beta 3 tubulin, CDCBM, TUBB3, Tubulin beta III

**Form:** Liquid

**Storage instructions:** Store at +4°C short term. Store at -20°C long term. Avoid freeze / thaw cycle.

**Storage buffer:** pH 7.4, 150mM NaCl, 0.02% sodium azide and 50% glycerol.

**Purity:** Affinity-chromatography

**Immunogen:** A synthesized peptide

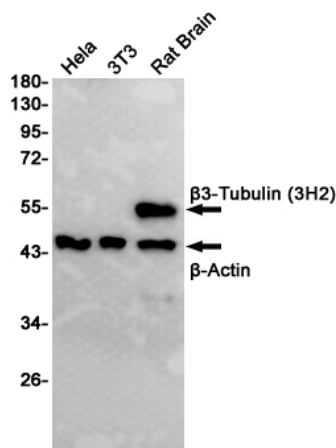
**Molecular Wt.:** 50kDa

### Application

WB: 1/500-1/2000

### Background

Swiss-Prot Acc.Q13509. Tubulin is the major constituent of microtubules. It binds two moles of GTP, one at an exchangeable site on the beta chain and one at a non-exchangeable site on the alpha chain. TUBB3 plays a critical role in proper axon guidance and maintenance.



Western blot analysis of extracts from various cell lines and tissues using  $\beta$ 3-Tubulin (3H2) Mouse mAb (upper) and  $\beta$ -Actin (8F10) Mouse mAb (200068-8F10, lower). Predicted band size: 55kDa. Observed band size: 55kDa.

**For Research Use Only. Not For Use In Diagnostic Procedures.**

[www.abways.com](http://www.abways.com)