

Product Datasheet

alpha Tubulin (4C9) Mouse mAb



Catalog No: AB3445

Reactivity: Human, Mouse, Rat

Isotype: Mouse IgG1

Applications: WB, IHC, ICC/IF, IP

www.abways.com

Information

UniProt ID: P68363

All Names: alpha tubulin 2, B alpha 1, H2 alpha, Hum a tub 1, TUBA1, TUBA1A, Tubulin alpha 1 chain

Form: Liquid

Storage instructions: Store at +4°C short term. Store at -20°C long term. Avoid freeze / thaw cycle.

Storage buffer: pH 7.4, 150mM NaCl, 0.02% sodium azide and 50% glycerol.

Purity: Affinity-chromatography

Immunogen: A synthesized peptide

Molecular Wt.: 52kDa

Application

WB: 1/1000-1/5000

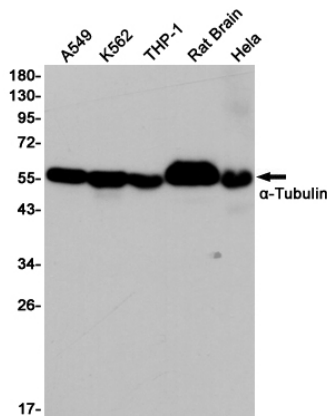
IHC: 1/100-1/500

ICC/IF: 1/50-1/200

IP: 1/20

Background

Swiss-Prot Acc.P68363.Tubulin is the major constituent of microtubules. It binds two moles of GTP, one at an exchangeable site on the beta chain and one at a non-exchangeable site on the alpha chain. SitesFeature keyPosition(s)Description



Western blot detection of alpha Tubulin in A549, K562, THP-1, Rat Brain, HeLa cell lysates using alpha Tubulin (4C9) Mouse mAb (1:5000 diluted). Predicted band size: 52KDa. Observed band size: 52KDa.

For Research Use Only. Not For Use In Diagnostic Procedures.

www.abways.com