

Product Datasheet

KDM1/LSD1 (1B2) Mouse mAb



Catalog No: AB3428

Reactivity: Human, Mouse, Monkey

Isotype: Mouse IgG1

Applications: WB

www.abways.com

Information

UniProt ID: O60341

All Names: KDM1; LSD1; AOF2

Form: Liquid

Storage instructions: Store at +4°C short term. Store at -20°C long term. Avoid freeze / thaw cycle.

Storage buffer: pH 7.4, 150mM NaCl, 0.02% sodium azide and 50% glycerol.

Purity: Affinity-chromatography

Immunogen: A synthesized peptide

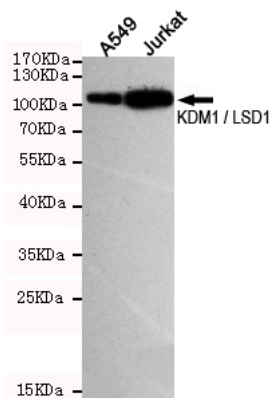
Molecular Wt.: 93kDa

Application

WB 1:500-1:1000

Background

Swiss-Prot Acc.O60341. The amine oxidase domain 2 (AOF2) gene encodes a nuclear protein (LSD1, ~95kDa) containing a Swirm domain, a FAD-binding motif, and an amine oxidase domain. This protein is a component of several histone deacetylase complexes, though it silences genes by functioning as a histone demethylase. LSD1 is a chromatin-modifying enzyme, which serve as a docking module for the stabilization of the associated corepressor complex (es) on chromatin.



Western blot detection of KDM1 / LSD1 in A549 and Jurkat cell lysates using KDM1 / LSD1 mouse mAb (dilution 1:500). Predicted band size: 93 Kda. Observed band size: 93KDa.

For Research Use Only. Not For Use In Diagnostic Procedures.

www.abways.com