

## Product Datasheet

# Lamin B1 Mouse mAb



Catalog No: AB3381

Reactivity: Human, Mouse, Monkey

Isotype: Mouse IgG2b

Applications: WB

[www.abways.com](http://www.abways.com)

### Information

**UniProt ID:** P20700

**All Names:** ADLD; lamin B1; Lamin-B1; LMN; LMN2; LMNB; Lmnb1;

**Form:** Liquid

**Storage instructions:** Store at +4°C short term. Store at -20°C long term. Avoid freeze / thaw cycle.

**Storage buffer:** pH 7.4, 150mM NaCl, 0.02% sodium azide and 50% glycerol.

**Purity:** Affinity-chromatography

**Immunogen:** A synthesized peptide

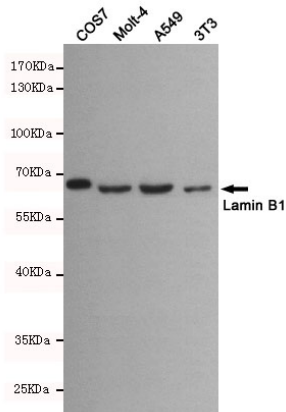
**Molecular Wt.:** 68kDa

### Application

WB 1:500

### Background

Lamins are components of the nuclear lamina, a fibrous layer on the nucleoplasmic side of the inner nuclear membrane, which is thought to provide a framework for the nuclear envelope and may also interact with chromatin.



Western blot detection of Lamin B1 in COS7, Molt-4, A549 and 3T3 cell lysates using Lamin B1 mouse mAb(dilution 1:500). Predicted band size: 68kDa. Observed band size: 68kDa.

**For Research Use Only. Not For Use In Diagnostic Procedures.**

[www.abways.com](http://www.abways.com)