

Product Datasheet

KDM1/LSD1 Mouse mAb



Catalog No: AB3103

Reactivity: Human,Monkey

Isotype: Mouse IgG1

Applications: WB,ICC/IF,IP

www.abways.com

Information

UniProt ID: O60341

All Names: KDM1;AOF2;BHC110;KIAA0601;LSD1; KDM1A;

Form: Liquid

Storage instructions: Store at +4°C short term. Store at -20°C long term. Avoid freeze / thaw cycle.

Storage buffer: pH 7.4, 150mM NaCl, 0.02% sodium azide and 50% glycerol.

Purity: Affinity-chromatography

Immunogen: A synthesized peptide

Molecular Wt.: 110KDa

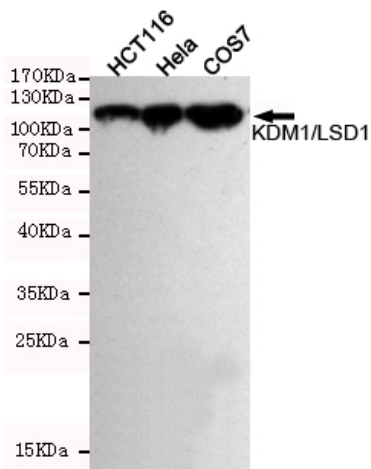
Application

WB 1:1000

ICC/IF 1:100 IP

Background

Histone demethylase that demethylates both 'Lys-4' (H3K4me) and 'Lys-9' (H3K9me) of histone H3,thereby acting as a coactivator or a corepressor,depending on the context.Acts by oxidizing the substrate by FAD to generate the corresponding imine that is subsequently hydrolyzed.Acts as a corepressor by mediating demethylation of H3K4me,a specific tag for epigenetic transcriptional activation.



Western blot detection of KDM1/LSD1 in HeLa,HCT116 and COS7 cell lysates using KDM1/LSD1 mouse mAb (1:1000 diluted).Predicted band size:110KDa.Observed band size:110KDa.

For Research Use Only. Not For Use In Diagnostic Procedures.

www.abways.com