

Product Datasheet

HSV-tag (4B9) Mouse mAb



Catalog No: AB0069

Reactivity: Human, Mouse, Rat, All

Isotype: Mouse IgG1

Applications: WB

www.abways.com

Information

UniProt ID:

All Names: QPELAPEDPED tag

Form: Liquid

Storage instructions: Store at +4°C short term. Store at -20°C long term. Avoid freeze / thaw cycle.

Storage buffer: pH 7.4, 150mM NaCl, 0.02% sodium azide and 50% glycerol.

Purity: Affinity-chromatography

Immunogen: A synthesized peptide

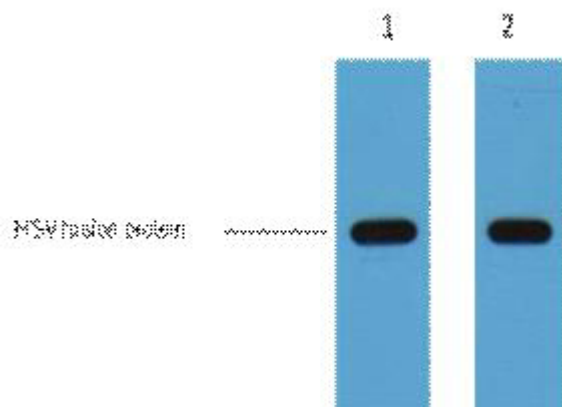
Molecular Wt.: kDa

Application

WB: 1/1000-1/10000

Background

The HSV (herpes simplex virus) epitope tag is frequently engineered onto the N- or C- terminus of a protein of interest so that the tagged protein can be analyzed and visualized using immunochemical methods. The recognized HSV peptide epitope represents the amino acid sequence QPELAPEDPED.



1ug HSV fusion protein+ Primary antibody dilution at 1)
1:5000. 2) 1:10000

For Research Use Only. Not For Use In Diagnostic Procedures.

www.abways.com