

## Product Datasheet

# HSV-tag (6G5) Mouse mAb



Catalog No: AB0068

Reactivity: Human, Mouse, Rat, All

Isotype: Mouse IgG1

Applications: WB

[www.abways.com](http://www.abways.com)

### Information

**UniProt ID:**

**All Names:** HSV epitope tag; QPELAPEDPED tag

**Form:** Liquid

**Storage instructions:** Store at +4°C short term. Store at -20°C long term. Avoid freeze / thaw cycle.

**Storage buffer:** pH 7.4, 150mM NaCl, 0.02% sodium azide and 50% glycerol.

**Purity:** Affinity-chromatography

**Immunogen:** A synthesized peptide

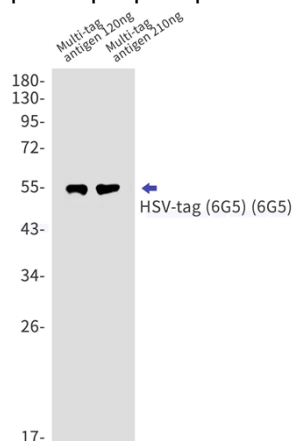
**Molecular Wt.:** kDa

### Application

WB: 1/1000-1/10000

### Background

The HSV (herpes simplex virus) epitope tag is frequently engineered onto the N- or C- terminus of a protein of interest so that the tagged protein can be analyzed and visualized using immunochemical methods. The recognized HSV peptide epitope represents the amino acid sequence QPELAPEDPED.



Western blot analysis of HSVtag in Multitag antigen 120ng, Multitag antigen 210ng lysates using HSVtag (6G5) antibody.

**For Research Use Only. Not For Use In Diagnostic Procedures.**

[www.abways.com](http://www.abways.com)