

Product Datasheet

Lamin B1 (9B10) Mouse mAb



Catalog No: AB0059

Reactivity: Human, Mouse, Rat

Isotype: Mouse IgG1

Applications: WB, IHC, ICC/IF, IP

www.abways.com

Information

UniProt ID: P20700

All Names: LMN; ADLD; LMN2; LMNB

Form: Liquid

Storage instructions: Store at +4°C short term. Store at -20°C long term. Avoid freeze / thaw cycle.

Storage buffer: pH 7.4, 150mM NaCl, 0.02% sodium azide and 50% glycerol.

Purity: Affinity-chromatography

Immunogen: A synthesized peptide

Molecular Wt.: 68kDa

Application

WB: 1/1000-1/10000

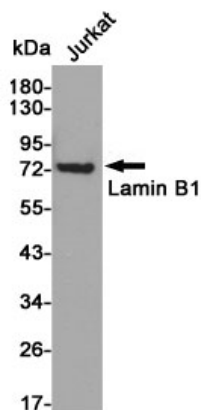
IHC: 1/50-1/200

ICC/IF: 1/100-1/200

IP: 1/20

Background

Lamins are components of the nuclear lamina, a fibrous layer on the nucleoplasmic side of the inner nuclear membrane, which is thought to provide a framework for the nuclear envelope and may also interact with chromatin. The structural integrity of the lamina is strictly controlled by the cell cycle, as seen by the disintegration and formation of the nuclear envelope in prophase and telophase, respectively.



Western blot analysis of Lamin B1 in Jurkat lysates using Lamin B1 antibody.

For Research Use Only. Not For Use In Diagnostic Procedures.

www.abways.com