

## Product Datasheet

# beta I Tubulin (1H10) Mouse mAb



Catalog No: AB0058

Reactivity: Human,Rat,Mouse

Isotype: Mouse IgG1

Applications: WB,IHC,ICC/IF

[www.abways.com](http://www.abways.com)

### Information

**UniProt ID:** Q9H4B7

**All Names:** beta I tubulin; TBB1; TUBB1; Tubulin beta 1; Class VI beta tubulin

**Form:** Liquid

**Storage instructions:** Store at +4°C short term. Store at -20°C long term. Avoid freeze / thaw cycle.

**Storage buffer:** pH 7.4, 150mM NaCl, 0.02% sodium azide and 50% glycerol.

**Purity:** Affinity-chromatography

**Immunogen:** A synthesized peptide

**Molecular Wt.:** 50kDa

### Application

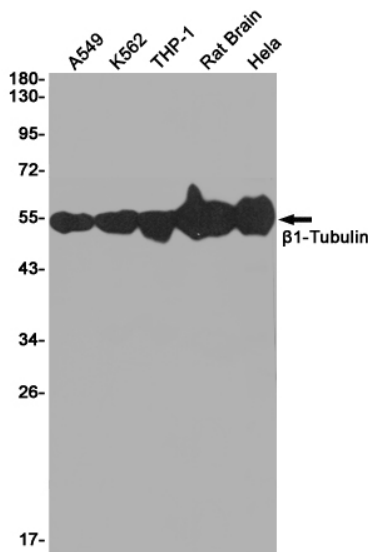
WB: 1/500-1/1000

IHC: 1/50-1/100

ICC/IF: 1/50-1/200

### Background

Tubulin is the major constituent of microtubules. It binds two moles of GTP, one at an exchangeable site on the beta chain and one at a non-exchangeable site on the alpha chain .



Western blot analysis of beta I Tubulin in A549,K562,THP1,Rat Brain,HeLa lysates using beta I Tubulin (1H10) antibody.

**For Research Use Only. Not For Use In Diagnostic Procedures.**

[www.abways.com](http://www.abways.com)