

## Product Datasheet

# alpha Tubulin Antibody



Catalog No: AB0050

Reactivity: Saccharomyces cerevisiae (yeast)

Isotype: Rabbit IgG

Applications: WB

[www.abways.com](http://www.abways.com)

### Information

**UniProt ID:** P09733

**All Names:** TAlpha-tubulin 1;H2 ALPHA;LIS3;TUBA1;TUBA1A;Tuba4a;Tubulin alpha-4A chain;

**Form:** Liquid

**Storage instructions:** Store at +4° C short term. Store at -20° C long term. Avoid freeze / thaw cycle.

**Storage buffer:** pH 7.4, 150mM NaCl, 0.02% sodium azide and 50% glycerol.

**Purity:** Affinity-chromatography

**Immunogen:** Synthesized peptide

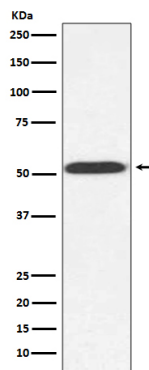
**Molecular Wt.:** 50 kDa

### Application

WB: 1:3000~1:10000

### Background

Tubulin is the major constituent of microtubules. It binds two moles of GTP, one at an exchangeable site on the beta chain and one at a non-exchangeable site on the alpha chain.



Western blot analysis of alpha Tubulin expression in Saccharomyces cerevisiae (yeast) cell lysate.

**For Research Use Only. Not For Use In Diagnostic Procedures.**

[www.abways.com](http://www.abways.com)