

Product Datasheet

alpha Tubulin Antibody

Catalog No: AB0048

Reactivity: Human Mouse Rat

Isotype: Rabbit IgG

Applications: WB IHC ICC/IF IP FC



www.abways.com

Information

UniProt ID: P68366

All Names: Tubulin alpha 4A; Tubulin H2-alpha; Tuba4a; bA408E5.3; B ALPHA 1;

Form: Liquid

Storage instructions: Store at +4°C short term. Store at -20°C long term. Avoid freeze / thaw cycle.

Storage buffer: pH 7.4, 150mM NaCl, 0.02% sodium azide and 50% glycerol.

Purity: Affinity-chromatography

Immunogen: A synthesized peptide

Molecular Wt.: 50 kDa

Application

WB 1:1000~1:5000

IHC 1:50~1:200

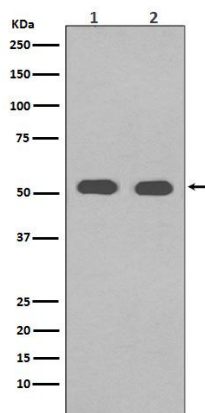
ICC/IF 1:50~1:200

IP 1:50

FC 1:50

Background

Tubulin is the major constituent of microtubules. It binds two moles of GTP, one at an exchangeable site on the beta chain and one at a non-exchangeable site on the alpha chain.



Western blot analysis of alpha Tubulin in (1) HeLa cell lysate; (2) NIH/3T3 cell lysate.

For Research Use Only. Not For Use In Diagnostic Procedures.

www.abways.com