

## Product Datasheet

# GFP tag Antibody

Catalog No: AB0047

Reactivity: ALL

Isotype: Rabbit IgG

Applications: WB



[www.abways.com](http://www.abways.com)

### Information

**UniProt ID:** P42212

**All Names:** Green fluorescent protein;GFP;

**Form:** Liquid

**Storage instructions:** Store at +4°C short term. Store at -20°C long term. Avoid freeze / thaw cycle.

**Storage buffer:** pH 7.4, 150mM NaCl, 0.02% sodium azide and 50% glycerol.

**Purity:** Affinity-chromatography

**Immunogen:** Synthesized peptide

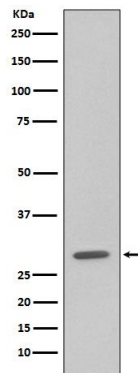
**Molecular Wt.:** 26kDa

### Application

WB: 1:3000~1:10000

### Background

Green fluorescent protein has been engineered to produce a vast number of variously colored mutants, fusion proteins, and biosensors. Fluorescent proteins and its mutated allelic forms, blue, cyan and yellow have become a useful and ubiquitous tool for making chimeric proteins, where they function as a fluorescent protein tag. Typically they tolerate N- and C-terminal fusion to a broad variety of proteins.



Western blot analysis of extracts from GFP fusion protein, using GFP tag antibody.

**For Research Use Only. Not For Use In Diagnostic Procedures.**

[www.abways.com](http://www.abways.com)