

Product Datasheet

beta Tubulin III Antibody



Catalog No: AB0041

Reactivity: Human Mouse Rat

Isotype: Rabbit IgG

Applications: WB IHC ICC/IF IP FC

www.abways.com

Information

UniProt ID: Q13509

All Names: beta-4; tubulin beta-4; Tubulin beta-4 chain; Tubulin beta-III; CFEOM3A; MC1R; TBB3; TUBB3; TUBB4; Tubulin beta-3 chain; tubulin, beta 3; tubulin, beta, 4,beta tubulin

Form: Liquid

Storage instructions: Store at +4° C short term. Store at -20° C long term. Avoid freeze / thaw cycle.

Storage buffer: pH 7.4, 150mM NaCl, 0.02% sodium azide and 50% glycerol.

Purity: Affinity-chromatography

Immunogen: A synthesized peptide

Molecular Wt.: 50 kDa

Application

WB 1:3000~1:10000

IHC 1:50~1:200

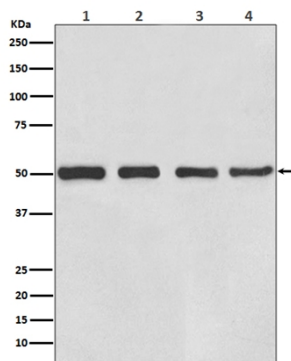
ICC/IF 1:50~1:200

IP 1:50

FC 1:100

Background

TUBB3 Tubulin is the major constituent of microtubules. It binds two moles of GTP, one at an exchangeable site on the beta chain and one at a non-exchangeable site on the alpha-chain. TUBB3 plays a critical role in proper axon guidance and maintenance.



Western blot analysis of beta Tubulin III expression in (1) HeLa cell lysate; (2) PC-12 cell lysate; (3) Mouse brain lysate; (4) Rat brain lysate.

For Research Use Only. Not For Use In Diagnostic Procedures.

www.abways.com