

Product Datasheet

beta I Tubulin Antibody



Catalog No: AB0040 Reactivity: Human, Mouse, Rat, Cow, Dog, Monkey

Isotype: Rabbit IgG Applications: WB IHC ICC/IF FC

www.abways.com

Information

UniProt ID: Q9H4B7

All Names: Beta tubulin 1, class VI; Class VI beta tubulin antibody; TBB1_HUMAN; TUBB1; Tubulin beta 1 class VI; Tubulin, beta 1 antibody

Form: Liquid

Storage instructions: Store at +4°C short term. Store at -20°C long term. Avoid freeze / thaw cycle.

Storage buffer: pH 7.4, 150mM NaCl, 0.02% sodium azide and 50% glycerol.

Purity: Affinity-chromatography

Immunogen: Synthesized peptide

Molecular Wt.: 50kDa

Application

WB: 1:3000~1:10000

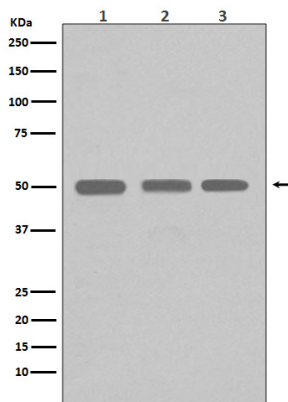
IHC: 1:100~1:200

ICC/IF: 1:100~1:200

FC: 1:100

Background

Tubulin is the major constituent of microtubules. It binds two moles of GTP, one at an exchangeable site on the beta chain and one at a non-exchangeable site on the alpha chain (By similarity).



Western blot analysis of beta I Tubulin expression in (1)HeLa cell lysates; (2)A375 cell lysate; (3)MCF-7 cell lysate.

For Research Use Only. Not For Use In Diagnostic Procedures.

www.abways.com