

## Product Datasheet

# beta Tubulin Antibody

Catalog No: AB0039

Reactivity: Human Mouse Rat

Isotype: Rabbit IgG

Applications: WB IHC ICC/IF FC



[www.abways.com](http://www.abways.com)

### Information

**UniProt ID:** P07437

**All Names:** Beta 4 tubulin; Beta 5 tubulin; Beta1 tubulin; Tubulin beta chain; Tubulin beta class I;

**Form:** Liquid

**Storage instructions:** Store at +4°C short term. Store at -20°C long term. Avoid freeze / thaw cycle.

**Storage buffer:** pH 7.4, 150mM NaCl, 0.02% sodium azide and 50% glycerol.

**Purity:** Affinity-chromatography

**Immunogen:** A synthesized peptide

**Molecular Wt.:** 50 kDa

### Application

WB 1:3000~1:20000

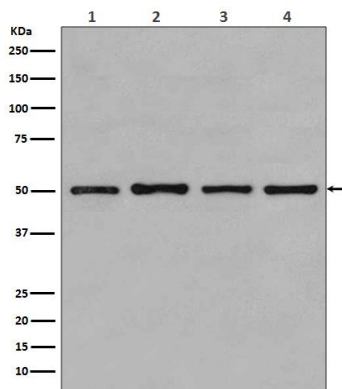
IHC 1:50~1:200

ICC/IF 1:50~1:200

FC 1:100

### Background

Tubulin is the major constituent of microtubules. It binds two moles of GTP, one at an exchangeable site on the beta chain and one at a non-exchangeable site on the alpha chain.



Western blot analysis of beta Tubulin expression in (1)MCF-7 cell lysate; (2)COS-1 cell lysate; (3)Jurkat cell lysate; (4)HeLa cell lysates.

**For Research Use Only. Not For Use In Diagnostic Procedures.**

[www.abways.com](http://www.abways.com)